

NEW CENTER
FOR ARTS & CULTURE

This Issue...



**A Fine
Romance:
Jewish
Songwriters,
American
Songs**

ANNUAL REPORT

THE NEW CENTER FOR ARTS AND CULTURE FISCAL YEAR 2010 IN REVIEW



NEW CENTER
LIVE!
**Revisit this
past year's
successful
programs**



PRISM
**Food,
festivals
and fun
for young
adults**



THE GREAT
GOD DEBATE
**Attracted
over 1,000
people**

FROM THE EXECUTIVE DIRECTOR'S DESK



What is Jewish culture?

This is a question that many people have tried to answer —

in books, films, and op-ed pieces, on morning talk shows and Friday evening services, through ritual and rebellion, as children and adults, with impassioned speeches and non-committal shrugs. How is it different from American culture? Is it culture made by Jews or culture that speaks to Jewish tradition? Will I know it when I see it?

For the New Center for Arts and Culture and its audiences, the answer to this question is not an answer — it is a conversation. And perhaps a particularly Jewish kind of conversation, with many voices, more than a few digressions, some grumbling, a lot of laughter, and the occasional disagreement. In its brief history, the New Center has become Boston's leading Jewish cultural center and the home of the community's great conversation with itself.

We explore Jewish culture one original and iconic figure at a time. By creating Boston's only public forum entirely dedicated to exploring the contributions and ideas of major Jewish figures of our time — artists, writers and public figures who share their lives and work — we are writing the history of what contemporary Jews are contributing to both American and world cultures.

In our first full year of programming, New Center *LIVE!* has presented a

remarkable range of voices, including Congressman Barney Frank, sex therapist Dr. Ruth Westheimer, author Bruce Feiler, cartoonist Roz Chast, atheist Christopher Hitchens and Rabbi David Wolpe, composer Osvaldo Golijov, and StoryCorps founder Dave Isay. Their lives and achievements speak to the diversity of Jewish life today and the often subtle and complex ways in which Jewish heritage makes itself known in contemporary culture.

We have found that these questions and conversations are no less pressing for the young adult community. Our Prism programs invite young adults to re-imagine the role that Jewish history, art, and culture can play in their lives by engaging them through programs that are fresh, original and insightful. An evening exploring modern Jewish identity through Jewish popular records from the 1940s to the 1980s at the House of Blues; a screening of shorts produced by students at a Modern Orthodox film school in Jerusalem; reviving Mimouna, a festive Moroccan post-Passover celebration in collaboration with Boston's Muslim young adult community — these are some of the programs that have drawn hundreds of Jewish young adults to Prism.

Addressing the needs of Boston's urban youth over the last three summers, we provided enriching arts and culture experiences to 2,500 children in the high-risk ages of 11 to 14 through *Explore World Arts*. These highly interactive and culturally diverse performing arts workshops have been enjoyed by youngsters at Boston's Camp Harbor View and the Boys & Girls Clubs summer camps in Chelsea, Charlestown and Roxbury.

If there is one thing Jewish history has taught us, it is that you don't need a single place for a community and a culture to thrive. The success of our programming has convinced us that the New Center does not need a physical home at this time. Therefore, our Board voted not to pursue a building on the Rose Fitzgerald Kennedy Greenway. As a cultural center "without walls," the New Center produces and presents programs in the most appropriate venues in the city, and people are flocking to them!

Beginning this fall, to accommodate our expanding audience, we are thrilled to be presenting our entire third season of New Center *LIVE!* in the Charles Mosesian Theater, a state-of-the-art proscenium theater at the Arsenal Center for the Arts in Watertown.

The generosity of our donors, the wise guidance of our Boards of Directors and Overseers, the enthusiastic support of our Friends of New Center *LIVE!* and host committees, and, of course, our loyal and vocal audiences — all have combined this past year to make the New Center vital and exciting!

You are all valued members of the New Center community.

Thanks for making our 2009-2010 seasons such a great success!

Sincerely,

Francine Achbar
Executive Director

NEW PROGRAMS

New Center OnSTAGE premieres with **A FINE ROMANCE**

A close to capacity crowd filled the newly renovated Paramount Theater for the New Center for Arts and Culture's production of *A Fine Romance*. Boston Musical Theater and author David Lehman kept the crowd entertained with music, humor, trivia and songs featuring Jewish composers of the Great American Songbook.

"The classic American popular song is the most versatile style of music," explained Lehman, the author of *A Fine Romance: Jewish Songwriters, American Songs*. "It is as endearing as it is enduring."

Boston Musical Theater delighted the audience from their first song, *A Fine Romance* - featuring all four group members in four-part harmony — to the last song, an upbeat rendition of *That's Entertainment*.

Lehman took the audience on a tour of the history of the Great American Songbook and the Jewish composers who helped to shape it.



Boston Musical Theater and David Lehman

"Romance and love are at the heart of the American Songbook and Jewish composers were in the heart of America," he told the audience. Lehman discussed the works of great composers and lyricists like Dorothy Fields, George and Ira Gershwin, Jerome Kern, Irving Berlin, Harold Arlen, and Richard Rogers and Lorenz Hart.

Lehman peppered his historical tour with interesting anecdotes and details

that tied well-known songs back to Jewish religious music. He explained that many of these great writers were the sons of cantors, and they used the cantorial melodies that were familiar to them in their compositions.

Many of these great composers "put the spirit of Judaism into their work as if the theater was their temple of choice."

THE NEW CENTER WELCOMES DIRECTOR OF DEVELOPMENT HELEN KADISH



Helen comes to the New Center from the Solomon Schechter Day School of Greater Boston, where she led highly successful annual and capital fundraising efforts for more than 25 years.

Helen began her career at Combined Jewish Philanthropies. She has served on the boards of Zamir Chorale and the Jewish Community Housing for the Elderly.

"The New Center for Arts and Culture is one of the most dynamic and fast growing Jewish organizations in the Greater Boston panoply," says Helen. "The potential to connect the community with thinkers, writers, and performers who shine new light on

compelling Jewish topics is enormous. Attracting philanthropic investment for this exciting endeavor promises to be challenging and great fun."

Helen is an honors graduate of George Washington University and holds a masters degree from the Heller School at Brandeis University. She lives in Newton with her husband Dr. Sidney Kadish, Professor of Radiation Oncology at UMass Medical School.

New Center LIVE! Fall 2009

NEW CENTER LIVE! HOST COMMITTEE FALL 2009 - SPRING 2010

Michelle Barmazel and Kevin Steinberg	Harriet and Dr. Mickey Goldin
Susan and Dr. Barry Benjamin	Pam and Alan Goodman
Dr. Susan and Barry Bergman	Rosalind Gorin and Dr. Matthew Budd
Sandra and Paul Berkowitz	Ruth Isaacs
Katie Connolly and Sander Cohan	Helen and Dr. Sidney Kadish
Mady and Dr. Bruce Donoff	Roleen and Dr. Aubrey Katz
Fern Fisher and Jack Eiferman	Deborah Sinay and Charles Kravetz
Abby and Kenn Elmore	Pat Kreger and Dr. Larry Cohan
Michele Fishel and Barry Weisman	Devra B. Lasden
Alan S. Geismer	Sally Kaplan Levy and Dr. Bruce Levy
Rachel Glazer	Bonnie Margulies and Dr. Alfred S. Margulies



Selma L. Mayer	Shellee Robbins and Donald Steinbrecher
Chana and Steven Meyer	Syrille and Dr. Paul Rosman
Carol and Michael Michael ^{zL}	Renee and Dr. David Rudolph
Joyce Field Pastor and Dr. Bruce M. Pastor	Leslie and Steven Saul
Suzanne and Norman Priebatsch	Mimi and James Segel
Fran and Dr. Don Putnoi	Lisa Seidel
	Karen Tucker and Dr. Jerry Avorn

Dr. Ruth Westheimer - Heavenly Sex



Dr. Ruth Westheimer enjoys a laugh during her conversation with *Chronicle's* Ted Reinstein.



New Center LIVE! Fall 2009

Bruce Feiler - America's Prophet



After debuting to sold-out audiences in Spring 2009, New Center *LIVE!* was back for a second successful season in Fall 2009. The season kicked-off with a bang in October with renowned sex therapist Dr. Ruth discussing surprising relationships between sex and the Bible. Next to take the stage was Bruce Feiler, author of *America's Prophet: Moses and the American Story*. The final event for the season featured Congressman Barney Frank in a revealing conversation about his life and career. All three events were extremely popular, both the Dr. Ruth and Barney Frank programs selling-out.



Alan Rottenberg, Debbie Rottenberg and New Center Board Chair Paula Sidman



Bruce Feiler and Rabbi Harold Kushner took turns interviewing each other.

Congressman Barney Frank - Being Frank



Congressman Barney Frank and CNN's David Gergen explored Congressman Frank's life and politics during their conversation.

Special Thanks to Our Fall 2009 and Spring 2010 New Center LIVE! Sponsors

Coldwell Banker
Residential Brokerage

Goulston & Storrs

Rentals Unlimited

TPW Financial

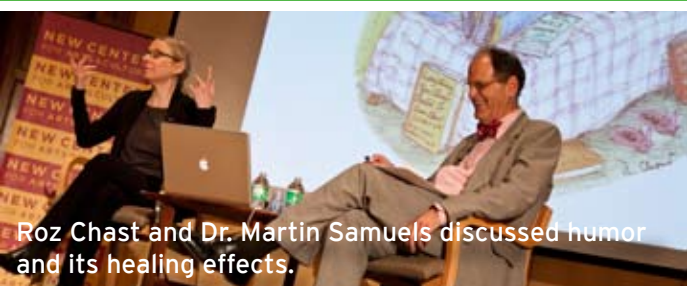
The Colonnade Hotel

Community
Newspaper Company

90.9 WBUR

WGBH

Roz Chast - The Best Medicine: Humor and the Healing Arts



Roz Chast and Dr. Martin Samuels discussed humor and its healing effects.

New Center *LIVE!* continued to enthrall audiences during the Spring 2010 season. For the first time, a performance element was added to one of the programs, when the Borromeo String Quartet appeared alongside Argentinean composer Osvaldo Golijov. *New Yorker* cartoonist Roz Chast entertained the audience as she discussed medicine and humor with Dr. Martin Samuels. StoryCorp's Dave Isay closed the season with a program dedicated to mothers.

The Passion of Osvaldo Golijov - Featuring the Borromeo String Quartet



The Borromeo String Quartet



Osvaldo Golijov and Boston Globe critic Jeremy Eichler

Dave Isay - Listen to Your Mother



StoryCorps founder Dave Isay was joined on stage by Jayne Guberman and Millie Guberman Kravetz for a conversation about mothers.

EXPLORE WORLD ARTS: The New Center Thanks the Havurah Or Hadash



Campers at the Chelsea Boys & Girls Club learn a dance from members of the Bamidele Dancers and Drummers troupe.

Explore World Arts got a boost when the program received a spontaneous gift from the Or Hadash havurah in Cambridge.

Longtime familiarity with the New Center led Or Hadash member Deborah Silverstein to suggest the contribution to the New Center.

Motivated by a desire to make a difference in the lives of underserved children from Greater Boston, Or Hadash chose *Explore World Arts* as its funding recipient. The gift made it possible for an additional 100 kids to enjoy multi-cultural dance and music performances and workshops.

The Great God Debate - Rabbi David Wolpe and Christopher Hitchens



Rabbi David Wolpe, Gretchen Fox Stein, Jay A. Stein and Christopher Hitchens

Can the existence of God be proven? Would people behave morally without religion? How can ancient beliefs and practices be reconciled with modern science?

Curious about how some of today's great thinkers approach these topics, Jay Stein, an MIT-trained physicist and x-ray pioneer, who is Chairman Emeritus and Chief Technical Officer of the imaging company Hologic, shared his desire to turn his questions into a public program with New Center Executive Director Francine Achbar. In partnership with his wife, Gretchen Fox Stein, President of Fox RPM, a real estate project management firm, Stein provided a major gift to underwrite both The Great God Debate and the New Center's Spring 2010 season.

An audience of over 1,000 turned out to John Hancock Hall to hear Rabbi David Wolpe (*Why Faith Matters*) and atheist author Christopher Hitchens (*God Is Not Great: How Religion Poisons Everything*) engage in a spirited conversation moderated by WBUR's Tom Ashbrook.

"I have always been surprised how seldom the topic of God, which you might otherwise think is an important topic, is ever discussed openly in a public form," said Jay Stein. "I thought the time had come to have a good old fashioned debate to see what would happen if such a public discussion did take place."



WBUR's Tom Ashbrook, Rabbi David Wolpe, and atheist Christopher Hitchens



"During the Great God Debate I was pleased to see how many other people presumably also felt this was an overdue topic for public discussion. But I was somewhat surprised to discover during the question and answer period that the questions that concerned many in the audience were so different from the ones that concern me. I concluded that not only can't people agree on the answers about God, they can't even agree on the questions," explain Jay Stein.

Prism: Jewish Arts and Culture. Remixed.

Beyond Bubbie's Kitchen September 2009



Ming Tsai and Michael Schlow discuss Tsai's East-West Brisket Potstickers.

Following on the success of last year's inaugural event, *You Said...Whaaat?!*, Prism's programming season started off in September with *Beyond Bubbie's Kitchen*. Local celebrity chefs updated traditional High Holiday foods for participants to try. Next, *And You Shall Know Us By the Trail of Our Vinyl* took place in the Foundation Room at the House of Blues. The evening featured author Roger Bennett and Israeli DJ band Soulico. *Reel Love* presented films created by the Ma'aleh School in Israel. The highlight of the year was the revival of the traditional post-Passover Moroccan festival of *Mimouna*.



Jim Solomon of The Fireplace discusses his creation with attendees.

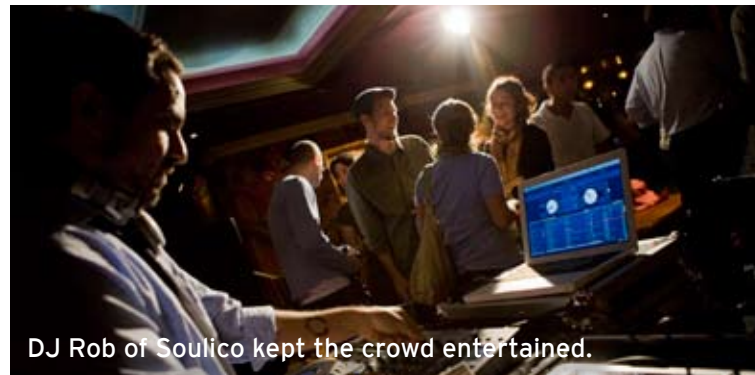


Participants packed the Artists For Humanity EpiCenter to enjoy the chefs' new, delicious creations.

You Shall Know Us By the Trail of Our Vinyl - November 2009



WGBH's Marco Werman and author Roger Bennett discussed the evolution of Jewish vinyl records.



DJ Rob of Soulico kept the crowd entertained.

Reel Love - January 2010



Participants watched short films, created by the Ma'aleh Film School, dealing with love and relationships. They then had the opportunity to discuss and debate the films and ideas.

Prism: Jewish Arts and Culture. Remixed.

Mimouna Festival - April 2010



Club D'Elf got the crowd rocking with their music, featuring the flavors of jazz, electronica, and hip-hop.



Moroccan Jewish communities historically marked the end of Passover by inviting Muslim neighbors to celebrate in their homes as part of a unique interfaith holiday, Mimouna.



Moroccan Caravan provided clothing for a fashion show during the Mimouna Festival.



The interfaith Turkish modern dance group Collage were featured performers.

MESSAGE FROM THE NEW CENTER CHAIR



What a terrific year this has been for the New Center! We cannot thank our supporters enough for their

generosity, volunteer service, and thoughtful feedback and advice. We have had some wonderful successes:

New Center *LIVE!* staged an attendance-record-breaking dialogue between Rabbi David Wolpe and noted contrarian Christopher Hitchens that was seen by over 1,000 Bostonians!

In its inaugural year, our Prism council designed and produced a variety of arts and culture programs especially for Boston's Jewish "Next Generation" and their diverse network of friends. Prism also introduced Boston to a Moroccan Jewish celebration, Mimouna, and collaborated with the American Islamic Congress to stage the city's first-ever Mimouna Festival, attracting over 500 young adults to its cutting-edge interpretation of this traditional post-Passover observation.

Explore World Arts concluded its fourth year of outreach to the city's underserved youth this summer. Grant funding enabled us to expand this program of interactive global music and dance performances and workshops to nearly 600 children attending Boys & Girls Clubs summer camps.

It was also a pleasure to welcome four new directors to the Board of Directors. The New Center is indeed privileged to benefit from the service of these four dedicated and seasoned professionals.



Barry Bluestone is the Stearns Trustee Professor of Political Economy, the founding Director of the Dukakis Center

for Urban and Regional Policy, and the founding Dean of the School of Public Policy and Urban Affairs at Northeastern University. A political economist, he has written widely in the areas of housing, local economic development, income distribution, business and industrial policy, labor-management relations, higher education finance, and urban economics. He is a member of the Executive Board of the Boston chapter of the American Jewish Committee.



Philip Gordon is an employment attorney and managing partner of the Gordon Law Group, LLP, which focuses on

employee representation. He was recently honored with election to the presidency of the Massachusetts Employment Lawyers Association and has been recognized as one of the "Top 100 Massachusetts Super Lawyers." He has also been a recipient of the *Boston Business Journal* "40 Under 40" honor. In addition to his work with the New Center, he serves on the Board of Governors for the Combined Jewish Philanthropies (CJP) and the Board of Directors for the Massachusetts Immigrant & Refugee Advocacy Coalition (MIRA).



Lorre Polinger is a licensed clinical social worker and practicing clinician. She has over 25 years experience

working with children, adults and families in both community mental health and Jewish family service settings. She is president of The Howard and Geraldine Polinger Family Foundation, which supports projects that strengthen Jewish life and identity, as well as programs that promote the performing arts. She has served on the board of the Combined Jewish Philanthropies, and currently serves on The Abraham Fund Initiatives international Board, and the Boston Jewish Community Women's Fund Board.



Suzanne Priebatsch is a senior investment management consultant at Morgan Stanley Smith Barney. A specialist

in investment strategies for individual and institutional clients, she is a frequent speaker on subjects dealing with inter-generational wealth transfer and financial strategies. Suzanne serves on the boards of the Combined Jewish Philanthropies, Hebrew College, and Hadassah. She is a Director of the Hadassah Brandeis Institute, the Anti-Defamation League, and the Dana Farber Cancer Institute Executive Women's Council.

The New Center for Arts and Culture will soon embark upon its third year of regular programming, bringing all that is unique about Jewish arts and culture to Greater Boston. Thanks to you all, our donors and friends, for helping the New Center shine a light on the spirit of Jewish culture.

Paula L. Sidman

Paula Sidman
Chair, Board of Directors

BOARD OF DIRECTORS

Paula L. Sidman, Chair

Robert L. Beal

Norman B. Leventhal

James Segel

Barry Bluestone

Michael A. Miller

Barry Shrage
ex officio

Ronald M. Druker
Past Chair

Lorre Polinger

Mark Sokoll
ex officio

Philip J. Gordon

Suzanne G. Priebatsch

Sari Anne Rapkin

Kevin Steinberg

Rosalind Gorin

Alan Rottenberg

BOARD OF OVERSEERS

Members of the newly established Overseers serve as ambassadors for the organization and work to enhance visibility and build support for the New Center's mission.

Rosalind Gorin & Irma Mann, Co-Chairs

Bruce Beal

Alan S. Geismer

Rick Melvoin

David Begelfer

Harriet Goldin

Helen Rees

Steven A. Cohen

Eve Harris

Kenneth Sweder

Glenda Fishman

Charles Kravetz

Barry Weisman

Marlo Fogelman

Lois Lindauer

Justin Wyner

Bonnie Margulies

NEW CENTER STAFF

Francine Achbar, Executive Director

Helen Kadish

Director of Development

Lynne Krasker Schultz

*Co-Director, Prism
Development Officer*

Michael Reichman

*Co-Director, Prism
Program Manager*

Janice Wright

*Associate Director
Grants and Development Research*

Ian Mogavero

Business Manager

Jesse Ulrich

Development Assistant

Jill Higgins

Marketing Manager

Matthew Brogan

Program Consultant

Fiscal Year 2010 FINANCIAL REVIEW

Fiscal 2010 Operating Statement - Unaudited

Operating Revenues:

Programs Support and Ticket Sales	119,393
Contributions	1,155,388
Other Income	2,595

Total Revenues:

1,277,376

Operating Expenses:

General & Administration	433,106
Fundraising	402,324
Institutional Advancement Programs	122,024
	318,981

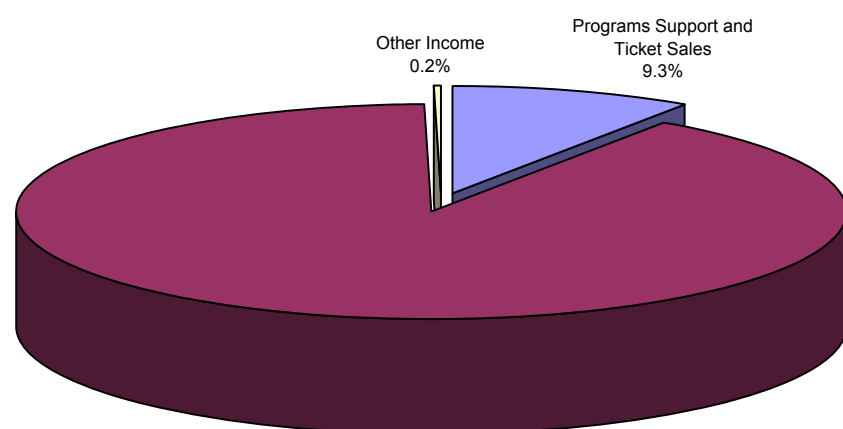
Total Operating Expenses:

1,276,435

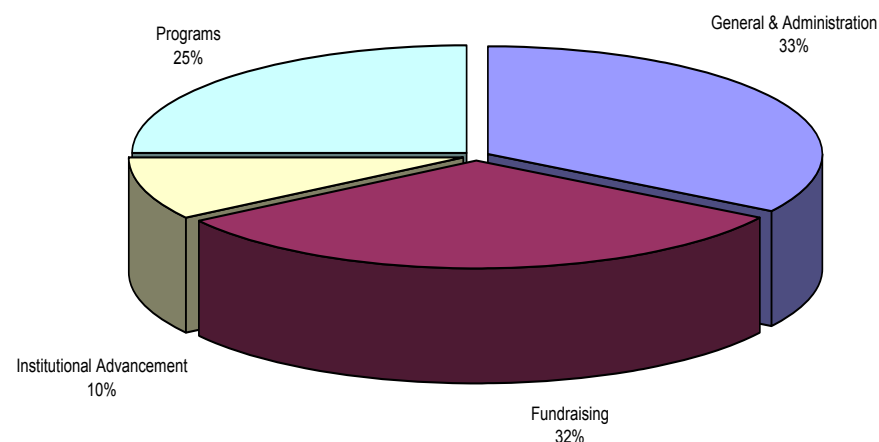
Net Operation Surplus:

941

New Center for Arts and Culture
Fiscal 2010 Revenues



New Center for Arts and Culture
Fiscal 2010 Expenses



The New Center gratefully acknowledges the following individuals for gifts received during the 2010 fiscal year, July 1, 2009 - June 30, 2010

Benefactors (\$50,000 and Above)

Bruce A. Beal and Robert L. Beal
Gretchen Fox Stein and Jay A. Stein

Partners (\$10,000 - \$24,999)

Rosalind Gorin and Matthew Budd
Camp Harbor View Foundation
Michael A. Miller

Associates (\$5,000 - \$9,999)

Anonymous (2)
Mary A. Akerson and Steven A. Cohen
Combined Jewish Philanthropies
Catherine S. England Fund
Harriet and Mickey Goldin
Suzanne and Norman Priebatsch
Alan and Debora Rottenberg
Norma and Roger A. Saunders and The Saunders Family Charitable Fund
Irma Mann and Norman Stearns z'l

Supporters (\$2,500 - \$4,999)

Francine Achbar and Dr. Stuart Mushlin
Bette Ann Libby and David Begelfer
Ellen Abbott Gilman Trust
Grand Circle Foundation
James W. Rollins Charitable Trust
Bonnie and Alfred Margulies
Milton and Shirley Levy Charitable Foundations
Or Hadash
Sari Anne Rapkin
Michelle Barmazel and Kevin Steinberg

Friends (\$1,000 - \$2,499)

Anonymous
Marjorie and Ben Achbar
Mary Ellen Colten and Barry Bluestone
Barbara Turrell and Gill Fishman
Leslie and Michael Gaffin
Donna K. Gilbert
Amy and Norman Gorin
Nancy and Peter Gossels
Marianne and Nicholas Iacuzio
Harriet and Dr. Warren Kantrowitz
Florence Koplow
Phyllis and Dr. Bram London
Bunny and Rick Melvoin
Chip Marler and Michael Miner
Wendy, Adam, Lucy and Oliver Newman

Helen Rees

Maggie Gold Seelig and Jonathan Seelig

Ellen and Ken Slater

Arthur Solomon

Jeane Ungerleider and William Stone

Genevieve and Justin Wyner

Donors (Up to \$1,000)

Anonymous
Asseo Griliches Endowment Fund
Sandra and David Bakalar
Michele and James Banker
Andrew Bass
Eugenie Beal
Susan and Dr. Barry Benjamin
Rabbi Fred Benjamin
Lakshmi and David Bloom



Rhoda and Bill Sapers



Carol Goldberg, Irma Mann, and Dr. Ruth Westheimer



Paula Lyons and Arnie Reisman



Adele Newman and Mady Donoff



Bob and Debbie First

Hon. Beverly and Sidney Boorstein
 Century Bank
 Will Corrdin
 Florence Coslow
 Estelle and Dr. Richard Cushner
 Bernard Dreiblatt
 Fern Fisher and Jack Eiferman
 Debbie and Bob First
 Glenda and Robert Fishman

Linda and John Freeman

Carolyn and Jerry Friedman

Jason Gaines

Joan and Joe Garb

Alan S. Geismer

Mary and Moises Gelrud

Jeanne Traxler and Robert Goisman

Susan and Bruce Gold

Evelyn Goldfine

Carol Goldstein

Ruth Gordon

Janet and Mark Gottesman

Elizabeth S. and Alan J. Green

Jill Greenberg

Barbara and Steve Grossman

Ellyn and Mark Harmon

Eve E. Harris

Helaine Hartman

Roslyn Heafitz

Carla Herwitz

Drs. Sherry and Ned Holstein

Felicia and Joshua Hyman

Alice Jelin Isenberg and Phillip Isenberg

Carole and Sam Jabbawy

Elizabeth and Daniel Jick

Helen and Dr. Sidney Kadish

Ellen Cohen-Kaplan and

Jeffrey Kaplan

Leon Knapp

Gerald Kraft

Rita Kraner

Barbara and Ed Krupat

Nancy E. Kummer

Janet and Eugene Lambert

Devra and Donald Lasden

Ellen and Barry Levine

Howard Levy

Susan and Joel Lewin

Amy Caplan and Geoffrey Lewis

Eleanor Lewis

Lois Lindauer

Carol and Martin Loria

Sonia and Joseph Michelson

Cecily and Alan Morse

Ilana Moyer

Judith and Edmond Murad

New England Foundation for the Arts

Adele and Andy Newman

Barbara Goldfarb Offringa and Greg Offringa

Bernard and Rena Olshansky

Maria Karagianis

Joyce and Dr. Bruce Pastor

Sandra and Don Perrin

Donna Podorefsky

Melinda and Dr. Jim Rabb

Ann and David Reisen

Paula Lyons and Arnie Reisman

Sara and Dr. David Richman

Rita Robert

Cantor Elias Rosemberg

Susan and David Rosen

Syrille and Dr. Paul Rosman

Marilyn and Mitchel Ross Family Fund

Alice Maron Rotfort

Ronni Sachs Kotler

Susan and Martin Samuels

Nancy and Alan Sasson

Betty Schiff

Miriam and James Segel

Deborah and Neal Shalom

Leslie and Warren Simmons

Marvin Sparrow Fund

Alan Strauss

Hope Suttin

Ellen and Robert Temkin

Nancy DiPerna and Steve Tharler

Brenda and Ralph Tracy

Naomi and Rob Tuchmann

Otile McManus and Robert Turner

Adrien Uretsky

Marlena and Kevin Ward

Mira and Howard Weiner

Elaine Werby

Laurie Werner

Amy and Ed Wertheim

Dr. Michael W. Yogman

Corporate Sponsors

Coldwell Banker

Chitra Staley of TPW Financial

Goulston & Storrs

Minelli, Inc.

In Kind Donations

Borromeo String Quartet

The Colonnade Hotel



Lorre Polinger



Sue and Gary Jacobson



Kevin Steinberg and Michelle Barmazel



David and Sandra Bakalar



Debbie Rottenberg and Betsy Solomon



Norman and Suzanne Priebatsch



Syrille Rosman and Annette Miller



Paula Sidman and Robert Beal



Ryna Greenbaum

To support the New Center for Arts and Culture and enable us to present exciting authors, performers and thinkers to Boston audiences, consider becoming a donor.

Checks made payable to NCAC may be sent to

20 Ashburton Place, 2nd Floor, Suite 1

Boston, MA 02108

For more information about supporting the New Center,

please call Lynne Krasker at 617-531-4614

NEW CENTER FOR ARTS & CULTURE

20 Ashburton Place, 2nd Floor | Suite 1 | Boston, MA 02108

NON-PROFIT ORG
US POSTAGE
PAID
Boston, MA
Permit No. 684

NEW CENTER FOR ARTS AND CULTURE

In all ages and virtually all corners of the world, Jewish culture has thrived through fruitful engagement and interaction with other cultures.

Building on this tradition, the New Center for Arts and Culture harnesses the power of arts, ideas, and culture to enrich people's lives; forge bonds between individuals and groups; and strengthen both the Jewish and broader communities.

The New Center does so by fostering the dynamic exchange and debate of ideas, by enabling the experiencing of arts and cultures from around the world, and by creating a vibrant platform for exploring new forms of cultural expression. All the New Center's work is illuminated through the prism of Jewish experience.

CONTACT US!

ADDRESS

20 Ashburton Place, 2nd Floor
Suite 1
Boston, MA 02108

PHONE

(617) 531-4610

WEBSITE

www.NewCenterBoston.org

E-MAIL

info@ncacboston.org

FACEBOOK

facebook.com/prismboston

TWITTER

twitter.com/NCACBoston